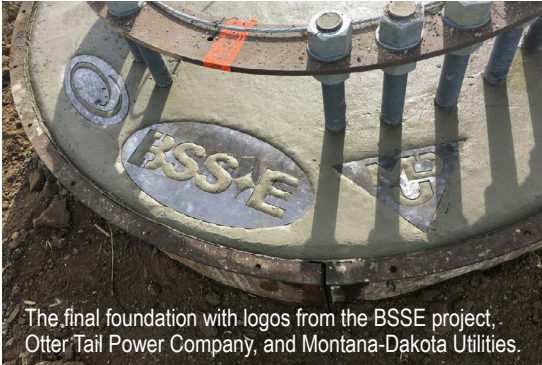




POWER DELIVERED

March 2018

FOUNDATIONS ARE COMPLETE!



The final foundation with logos from the BSSE project, Otter Tail Power Company, and Montana-Dakota Utilities.

In February 2018 we hit a major construction milestone by completing foundation installation. Crews made great progress pouring foundations during the past few months despite cold temperatures. With foundations complete, we'll continue setting structures and stringing conductor.

Pouring foundations in cold weather requires specific measures to ensure that concrete can cure to the required strength specifications. These measures include pouring concrete from the truck into the hole within an hour of the truck leaving the plant, super-heating the aggregate and water at the plant when placing into the truck, using additives that assist the curing process, and heating the rebar cage and anchor bolt assembly.



c/o HDR
701 Xenia Ave, Suite 600
Minneapolis, Minnesota 55416


WHAT'S INSIDE?

- Induced Voltage Reminder
- Construction Update
- Progress Map

 1-888-283-4678

 info@BSSETransmissionLine.com

 www.BSSETransmissionLine.com

 BSSE Field Office:
1209 Main St. | Webster, SD 57272

Contact us if you'd like to be added or removed from our mailing list.



INDUCED VOLTAGE REMINDER

An induced voltage occurs when electric charge accumulates on an otherwise neutral object, such as an electric fence, due to electric and magnetic fields from a nearby energized object, such as a transmission or distribution line. Below are precautions to mitigate electric fencing shock.

- Short out one or more of the fence insulators to the ground with a wire when the charger is disconnected.
- Install an electric filter to ground charges induced from the transmission line while allowing the DC charger to be effective.
- Contact us if you have a problem or concern regarding induced voltage to fencing or other structures within 100 feet of the edge of the transmission line right-of-way.

We'll continue working with landowners and providing information about potential induction of voltage on fences and other metal objects. If you have any questions or concerns, please contact your land agent.

You can find additional information about induced voltage in your landowner packet and on our website:

BSSETransmissionLine.com/Resources

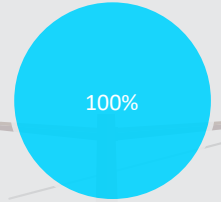
LANDOWNER INFORMATION
January 2018



CONSTRUCTION UPDATE

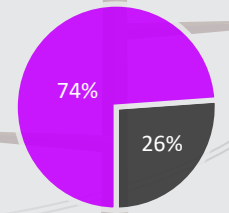
Foundations

Foundations are complete!



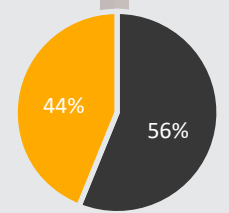
Structures

After helping with hurricane recovery efforts in Florida, our team is back to set structures in Brown County. We anticipate completing structure setting in August 2018.



Conductor

We'll continue stringing conductor in Day County and will work our way toward Brown County. We anticipate completing conductor stringing in November 2018.



■ Complete ■ Not Started



CONSTRUCTION PROGRESS MAP

See the latest construction progress at www.BSSETransmissionLine.com.

